

Notes:



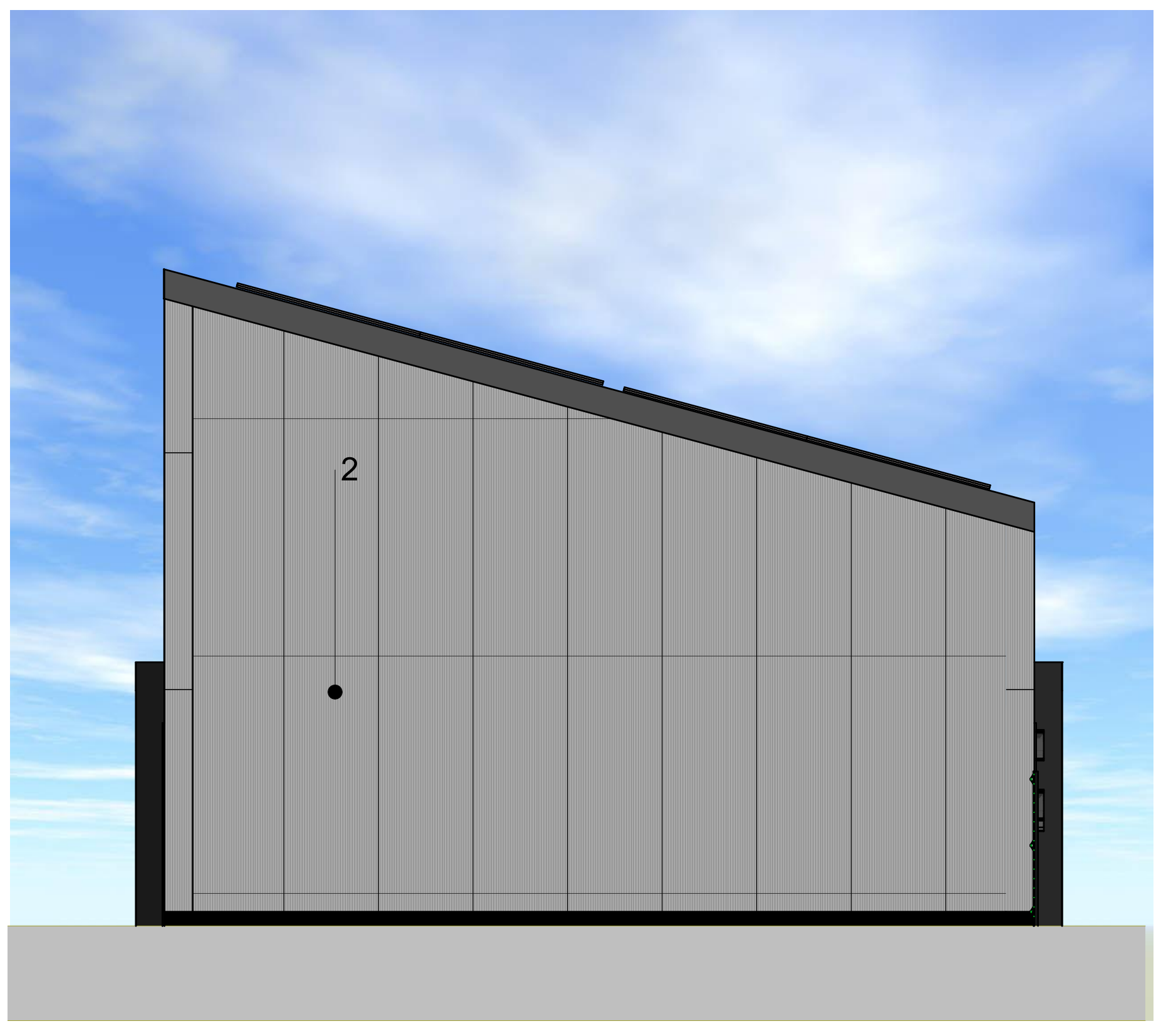
E-01 Elevation 1:50



E-02 Elevation 1:50



E-03 Elevation 1:50



E-04 Elevation 1:50

Ref.	Description	Materials
1	kingspan QuadCore KS1000RW LEC Roof Panel, anthracite in colour	
2	vertically oriented Kingspan QuadCore Evolution Axis Wall Panel, dark grey in colour	
3	vertically oriented larch timber cladding	
4	aluminium frame windows, dark grey in colour	
5	glazed aluminium door, dark grey in colour	
6	curtain walling, mullions and flashings dark grey in colour	
7	roller shutter, anthracite in colour	
8	aluminium surround, anthracite in colour	
9	louvre aluminium door, dark grey in colour	
10	solar panels	

note: \* obscure glass

Rev	Desc	By	Date

**bit**

Wellington Civic Offices, Larkin Way, Wellington, Telford, Shropshire, TF1 1LX  
 T: 01952 384500  
 W: www.bit-group.co.uk

Project  
**Newdale Pitches and Community Facilities**

Client  
**Telford & Wrekin Council**

Layout Title  
**Proposed Elevations**

Scale @ A0 | Status  
 1:50 | **Planning**

Drawing Number  
 project | drawing | zone | level | type | size | number | rev  
 21234 bit | | | | | | A\_00451 | 02